

Kay Rowe Nursery School



Together a better future

*Kay Rowe Nursery School
and Children's Centre*

HEALTH and SAFETY POLICY

Date: January 2022

Governor's signature: _____



1. PURPOSE

Kay Rowe Nursery School and Forest Gate Children's Centre is committed to ensuring the health, safety and welfare of employees and children, as far as is reasonably practicable. We fully accept our responsibility for all stakeholders who may be affected by our activities and will take steps to ensure that our statutory duties are met at all times in accordance with the relevant Standard Procedures, as issued by the London Borough of Newham.

Each individual has a legal obligation to take reasonable care for his or her own health and safety and for the safety of other people who may be affected by his or her acts or omissions. Every employee must cooperate with us to ensure all statutory duties are complied with. Full details of the organisation and arrangements for health and safety will be set out in the Health and Safety file on google drive and available on the website.

Jan 22 – This policy will be read alongside the COVID19 risk assessment and action plan.

The overall aim of this policy is to:

- ◆ Establish and maintain as far as is reasonable a safe and healthy environment throughout the school site.
- ◆ Ensure that everyone who uses the building has safe and appropriate access and exit.
- ◆ Enable as far as possible, all users of the premises to avoid hazards or to minimise and control those which are unavoidable.

2. SCOPE

This policy will be regularly monitored to ensure that the objectives outlined below are achieved. It will be reviewed annually and, if necessary, revised in the light of legislative or organisational changes. The objectives are to

- ◆ Establish safe working practices and procedures for all staff (including safer recruitment and food hygiene.)



- ◆ Ensure that storage, use, handling and transport of materials is safe.
- ◆ Provide proper first aid facilities.
- ◆ Have appropriate procedures for dealing with and reporting accidents.
- ◆ Provide adequate welfare facilities.
- ◆ Ensure that the school's premises, including its grounds and all buildings are well maintained, safe and fit for use.
- ◆ Ensure all equipment on the school site is well maintained, safe and fit for use.
- ◆ Ensure all staff, children and visitors are safe on premises and when off site for educational visits.
- ◆ Ensure all staff know what to do in the event of evacuation due to fire or other critical incident.
- ◆ Ensure that staff receive relevant health and safety training commensurate with their position.

3. RESPONSIBILITIES

ROLES AND RESPONSIBILITIES

On behalf of the Governing Body and the Headteacher, the Head teacher accepts overall responsibility for all matters, including health, safety and welfare.

Site Supervisor's Responsibilities

- ◆ Walking the school daily and noting any hazards, acting on them and reporting them to the Site Supervisor, Headteacher/ Assistant Headteacher or Children's Centre Coordinator.. (daily checks)
- ◆ Minor repairs should be addressed immediately if there is a health and safety priority.
- ◆ Monitoring of general cleanliness of the school daily, including conducting cleaning duties as appropriate.



- ◆ Monitoring the work of the cleaners and raising any concerns to the site supervisor or SLT.
- ◆ Liaison with and management of contractors, including ensuring all visitors are aware of our Health and Safety procedures alongside the Health and Safety co-ordinator.
- ◆ Testing fire alarms weekly and recording this.
- ◆ To ensure all cleaners have access to and understand COSHH sheets when handling cleaning chemicals.

Staff Responsibilities

- ◆ To ensure that the register is taken at the agreed time.
- ◆ To leave the area where they have been working in a tidy condition.
- ◆ To examine electrical equipment for any obvious defects before use and to switch off any electrical equipment after use.
- ◆ To examine play equipment before use to ensure safety and to make sure that it is used properly.
- ◆ To report faults and hazards to the site supervisor or Health and Safety co-ordinator directly.
- ◆ To open and close windows and lock doors as appropriate.
- ◆ To behave in a responsible manner at work e.g. not running indoors, checking doors have closed behind them.
- ◆ To use initiative in eliminating low level health and safety risks, ie. mopping up a wet floor and placing the appropriate signage in place. To also report any additional hazards by which they are not confident or qualified to deal with to the Health and Safety Co-ordinator or Site Supervisor to be dealt with accordingly.

Staff are to teach, encourage and remind all children:-

- ◆ To follow instructions.
- ◆ To be responsible for own actions especially in disputes and to follow the school rules.
- ◆ To respect equipment and to use it properly.



4. PROCEDURES

The Headteacher will draw up a risk assessment for the school after consultation with staff and a cycle of comprehensive risk assessment is undertaken. Risk Assessments are kept on file electronically at google drive.

COVID 19 addition - There is a comprehensive COVID risk assessment shared with all staff and governors.

The Site Supervisor will regularly report to the Head Teacher to discuss health and safety issues.

EQUAL OPPORTUNITY - LBN SP64, SP31

The health and safety policy applies to all members of the school community and to all visitors.

- ◆ The school attempts to be fully accessible to wheelchair users.
- ◆ New and expectant mothers will receive special consideration with regard to rest and exposure of the foetus to chemicals or other hazards.

EDUCATIONAL VISITS - LBN SP54, SP106

- Parental consent must be sought and children with special educational needs must be catered for.
- Educational off-site visits are covered by Newham Insurance. Staff to check certificates for validity.
- Staff will have visited the location to assess any risks, completed a risk assessment form and met with the EVC to discuss the trip.
- Staff to ensure that adult pupil ratio is safe.
- To instruct all members of the party on safety during the trip and to plan and organise the trip with safety in mind at all times.
- If using coaches ensure that seat belts are provided and that they are used.
- First aid box, correct clothing and mobile to be taken.



ACCIDENTS – LBN SP43, SP71, SP45

Minor

At all times the staff must wear protective clothing

- ◆ Minor cuts and bruises are cared for by first aiders.
- ◆ The injury is assessed and treated by the first aider and if necessary a senior manager is called.
- ◆ Parents are phoned to notify them of all head injuries even if quite minor.
- ◆ The child is then resettled back into the room, and observed.
- ◆ The incident is then recorded on an accident form which is given to the parent to sign on collection
- ◆ The accident form is handed in to the office where it will be filed
- ◆ Staff go to a quiet area eg the staff room to have minor accidents dealt with.

Major

At all times the staff must wear protective clothing

1. The first aider present will assess the situation and decide whether the child needs to go immediately to hospital or whether the child can wait for the parent/main carer to come to accompany the child to hospital. An ambulance will be called.
 - a) If the child needs to go straight to the hospital an ambulance will be called. Then the parent/carers will be contacted and arrangements will be made to meet the parent/main carer at the hospital. A member of staff will accompany the child to the hospital, but will not sign for any treatment to be carried out.
 - b) If the child can wait for the parent/main carer to come, then the parent/ main carer will be contacted and the child will be made as comfortable as possible. A member of staff will stay with the child until the parent/ main carer arrives. It will then be for the parent/main carer to take the child to hospital.



2. A report of the accident will be recorded on the accident form on the Newham online form – they will inform us of any next steps.
3. For information relating to a biting incident please refer to Appendix 2.

NOTE: If a child sustains an injury to the head, the parent/main carer is called and notify them so that they can make a decision as to whether to pick up the child as even a small bump could underlie something more serious.

FIRST AID - LBN SP22

At least one First Aider is on site all day. A list of Qualified First Aiders is displayed in convenient locations throughout the building outlining staff member and the level of first aid qualification they hold. The First Aid training list is reviewed termly by the headteacher and First Aid co-Ordinator to ensure that staff training in relation to First Aid is up to date.

First Aid Boxes

- ◆ First Aid boxes are available in each classroom and office.
- ◆ When going out on a visit a first aid kit is taken.
- ◆ The admin officer Rofna Khatun is responsible for restocking first aid boxes.
- ◆ Boxes are inspected by the Admin Officer – periodically.

Medicines - LBN SP98

- ◆ Medicines are only administered for chronic conditions or if prescribed by a doctor with parent/carers instructions.
- ◆ Non prescribed medicines are to be given by the parents/carers.
- ◆ Where school is to administer long term treatments a Care Plan is drawn up in consultation with the SENCO/Inclusion Manager.
- ◆ Medicine must be labelled and kept in the locked medicine cupboard or fridge in the staff room.

Precautions



- ◆ When administering first aid, disposable gloves, masks and aprons are provided and should be used to ensure that body fluids are not transmitted.
- ◆ Where body fluids are spilt they should be covered by absorbent material from a spill kit before removal and disinfectant after removal.
- ◆ Soiled clothing should be handled using disposable gloves and placed in a plastic bag for parents to deal with.
- ◆ Special waste bins are provided throughout the school for any materials with body fluids.

INFECTIOUS DISEASES - LBN SP50, SP92, SP105

See appendix 1

- ◆ In the event of an outbreak of a serious infection other than a normal childhood illness we will consult the Health and Safety advisor and the Health Authority.
- ◆ In the event of an outbreak of Rubella or chicken pox we will put up notices to warn any pregnant women in the centre.
- ◆ In the event of normal childhood complaints, parents will be informed by the teacher.
- ◆ It is the nursery policy to encourage and promote good health and hygiene for all the children in our care. This includes monitoring the children for signs and symptoms of communicable diseases such as chickenpox, measles, mumps, rubella, meningitis, hepatitis, diarrhea, vomiting and fevers of over 101F/38C or over.

ALCOHOL & DRUGS

Details of handling incidents involving suspected alcohol or drug misuse are in the Drugs Policy.

FIRE PROCEDURES - LBN SP93, SP48

A fire drill to be held once every term and reported to Governors.

FIRE FIGHTING EQUIPMENT - LBN SP21, SP37



Fire Wardens are members of staff trained in the use of equipment. Water and non-water based equipment available in offices and corridors are checked annually. They are only to be used to allow an exit or to control a minor problem like a waste paper bin fire or electrical unit problem. Be sure to switch off electrical supply.

All fire fighting equipment is checked annually by a registered contractor.

SMOKING

Kay Rowe Nursery school is a non smoking site – see No smoking Policy

VIOLENCE

- Any acts of violence against children or staff should be dealt with immediately through the school complaints procedure.
- In the case of fights between children, mediation would normally be managed by staff.
- Serious violence between children will be reported to the Head teacher, an investigation will take place and sanctions will be used according to the behaviour policy.

BULLYING

- The school abides by the council's policy for bullying and has a code of conduct, a behaviour policy and a complaints procedure, which deal in part with this issue.

ANIMALS – LBN SP41

- Class teachers are responsible for health and safety issues around class animals. Risk assessments should be in place when animals are used in the Teaching and Learning curriculum.
- In the event of a bite from an animal, refer to appendix 2
- Dogs are not allowed on the school site unless with the express permission of the Head teacher for educational purposes.
- Guide dogs for the blind are allowed on the premises.



BUILDING MAINTENANCE AND CLEANING

- The school must be kept clean and free from litter.
- All building work and decoration is to take place during holidays unless the Head teacher decides safe working practices can be managed satisfactorily.

GLAZING- LBN SP107

- All new windows are glazed to comply with safety regulations.
- Glazing is checked weekly by site supervisors and on the termly health and safety walk rounds
- All new doors are provided with vision panels for safety reasons.
- Anti glare coatings or curtains to be provided where necessary.

LIGHTING - LBN SP21

- It is the duty of all staff to report to the site supervisor any problems with lighting.
- Lights are provided for areas around the school grounds to discourage intruders and to assist safe movement around the site after dark.
- Curtains or blinds are provided where there is a glare.

SECURITY – LBN SP58

- During learning time all doors are closed and a security camera oversees all who enter and leave the site.
- All outside gates except the main gate, and all outer doors are locked.
- Only authorised staff and Governors should possess the entry code to gain entrance to the main school building. Code is changed annually.
- All staff have access to a locker where they should put all valuables. The school cannot be held responsible for valuables lost when not put in lockers.



CONTRACTORS AND VISITORS - LBN SP12

- Contractors and visitors should report their presence to the office. Their details are entered in the Visitors Book. A badge must be worn for identification. Exceptions to this are:
Responsible persons collecting or delivering children in their care.
Regular users of the service road, such as refuse collectors or food delivery drivers.
- Contractors working on site have the dual responsibility to follow the safety requirements of their employer and of the school. They are required to take all precautions necessary to ensure that they do not endanger the health and safety of anyone on site or in the surrounding areas and follow our contractors policy.
- If children are present when contractors and/or their equipment are on site, the contractors must comply with any additional safety requirements requested by the Head teacher, failing which the contractors may be requested to cease work and advice will be sought from the Safety Liaison Officer (Local Authority).

HAZARDOUS SUBSTANCES

- Hazardous Substances are kept in the Site Supervisor's cupboards that meet fire regulations.
- Material safety data sheets (MSDS) and/or manufacturer's guidance is kept in the Site supervisors shed (shed 3).
- It is the responsibility of the Head teacher to ensure that current MSDS and risk assessments for substances subject to the Control of Substances Hazardous to Health (COSHH) Regulations are kept on file and that the persons using these substances are made aware of this information.



SAFE WORKING PRACTICES - LBN SP47, SP46, SP56, SP80

- All staff to be trained in the use of equipment.
- All staff to check equipment before use and breakages reported to the Office Team.
- Equipment to be repaired by site supervisor if minor repairs or reputable contractors if major repairs required.
- All staff to be aware of safe manual handling.
- All electrical equipment to be PAT tested on a rolling program by site supervisor who is trained to do this.
- All dangerous substances to be kept in locked cupboards.
- All staff to receive training on manual handling to avoid injury.
- Correct equipment to be provided for the movement of heavy, awkward or bulky objects.

SLIPS, TRIPPING, FALLING - LBN SP47

- Where floors get wet constantly they should be covered in non slip lino or mats/ carpet to absorb water.
- Where floors have become wet due to leaks, they should be coned off and dried.
- Where drains are not working properly they should be jetted.
- Where floors are unsafe they should be reported to the site supervisor, or Head teacher.
- Where staff need to climb they should use suitable equipment provided - all staff have been trained in working at heights.
- Corridors and staircases must be free of obstruction.
- During frost, the site supervisor should ensure that there is sufficient salt/grit to deal with hazards and that this is first priority.



HEALTH AND SAFETY REPRESENTATIVE

We have designated staff who conduct risk assessments and Health and Safety checks (site supervisor). These are reported to the Health and Safety Co-ordinator.

STAFF DEVELOPMENT

- ◆ The Site Supervisor should attend courses on health & safety, manual handling and management of hazardous substances
- ◆ At least four members of staff should be fully trained first aiders.
- ◆ All staff to be trained in paediatric first aid. (where practicable)
- ◆ All staff should have a knowledge of fire safety.

TEMPERATURE - LBN SP28, SP75

- Minimum temperatures:
- 18 degrees in classrooms - COVID ventilation may mean this varies.
- All classrooms have CO2 monitors and temperature gauges
- Playgrounds have shaded areas to protect children from the sun.
- Children are not allowed to remove tops and are encouraged to wear hats and cream to avoid the adverse effects of the sun.
- Curtains or blinds or other shading methods are in place where there is a possibility of high temperatures.

STAFF WELFARE - LBN SP58, SP104

- We recognise that the mental health and wellbeing of individuals has a direct link to how people feel about themselves and the behaviour they display and how they treat others.
- The school has a commitment to supporting positive mental health and wellbeing. COVID 19 – this has been a focus and we have 2 well being champions and regular half termly well being staff meetings.
- Wellbeing promotes physical, mental and spiritual health as a sustainable value for the whole school community.
- The staff room is provided for all staff to relax with suitable seating and areas where staff can eat comfortably. Hot drinks can be made and there is



a microwave for heating food. This room is cleaned daily. Staff have a responsibility to keep the room tidy.
COVID 19 – staff may need to eat in their bases sometimes in order for there not to be too many staff in one area.

RECORD KEEPING

Health and Safety Records are kept on paper files kept at the front office / site services office and contain the following records:

Termly and annual inspections are carried out.

An audit is carried out by NPW and by LBN in partnership with the Headteacher and site supervisor.

Termly inspections of the site are also conducted. Staff also responsible for areas are Class Teachers and support staff – for their own classrooms and resource areas and storage areas.

Senior admin officer - for admin office areas

CC staff - CC offices and CC community room and consulting rooms and CC storage areas

Site Supervisors – for grounds and other areas not covered above

- ◆ Accident Investigations the Head teacher investigates all serious accidents. A report together with recommendations for action, is submitted to the Governing body annually.



- ◆ Fire Drill Log A fire drill is arranged each term by the Head teacher and carried out by the site supervisor. The date is recorded in the Fire Drill Log.
- ◆ Fire Alarm Testing The site supervisor tests the fire alarms each week during term time. The date and the call point used are entered in the log.
- ◆ Fire Appliance Tests All fire appliances are subject to annual inspection by LM Electrical services and certificates of inspection kept.
- ◆ Portable Electrical Appliance Tests An electrical appliance register containing details of all portable appliances, the recommended frequency of testing (determined by the amount of use and other factors), and the results of the tests are kept.
- ◆ Outdoor Play Equipment Checks Outdoor play equipment is checked quarterly.
- ◆ COSSH Assessments A list of hazardous substances used by the school is by the site supervisor . Each of these substances has been subject to a COSSH assessment. New materials which may be of a hazardous nature are assessed before use and the person placing the order will request a Material Safety Data Sheet or other manufacturer's guidance at the time of ordering.

SUCCESS CRITERIA

- ◆ The school community will have an understanding of how to avoid, prevent and reduce risks to their health and safety.
- ◆ All members of the school community will take responsibility for their own safety and the safety of others.
- ◆ When a hazard is noticed, all members of the school community will report the hazard and take steps to ensure that safety is a priority.

MONITORING

- ◆ Head teacher to monitor accident reports looking for trends and investigating how they can be prevented.
- ◆ Site Supervisor to monitor notebook on a daily basis to check that problems are sorted out.
- ◆ Site Supervisor/ headteacher to walk the site half termly and note problems.



EVALUATION

- ◆ The Head Teacher to evaluate the policy annually and report to the Governing Body
- ◆ The Governors do spot checks of the building to ensure that safety is paramount, Safeguarding governor will do a walk round.
- ◆ Staff to inform Head teacher or the site supervisor immediately a problem is noticed.

5. RELATED DOCUMENTS

- COVID19 risk assessment and action plan
- No Smoking Policy
- Educational Visits Policy
- Managing Medicines in School Policy
- Internet Safety Policy
- Equalities Policy
- Whistle Blowing Policy
- Harassment Policy
- Sun Smart Policy
- Business continuity plan inc Fire / intruder/ Emergency evacuation procedures

6. RELATED PROCEDURES

- Health and Safety Standard procedures, London Borough of Newham

7. GLOSSARY

- LEA – Local Education authority
- COSHH – Control of Substances Hazardous to Health
- MSDS – Materials Safety Data Sheets
- PE – Physical Education



8. POLICY STORAGE

A copy of this policy is kept electronically on google drive, the school website . All staff sign to indicate they have read its content after annual training.

8.2 Appendix

EXCLUSION PROCEDURE FOR ILLNESS/COMMUNICABLE DISEASE

Minimum Periods of Exclusions from Nursery.

<i>Disease/Illness</i>	<i>Minimal Exclusion of Period</i>
Flu	Until recovered
Temperature	If sent home ill, child must be off for 24 hours
Vomiting and/or Diarrhoea	48 hours
Conjunctivitis	none
Chickenpox	5 days from appearance of the rash
Gastro-enteritis, food poisoning, salmonellas and dysentery	48 hours or until 2 clear nappies or for notifiable diseases until advised by the relevant health official
Hepatitis A	7 days from onset of jaundice
Measles	4 days from appearance of the rash
Meningococcal infection	Until recovered from the illness
Mumps	5 days from the onset of swollen glands



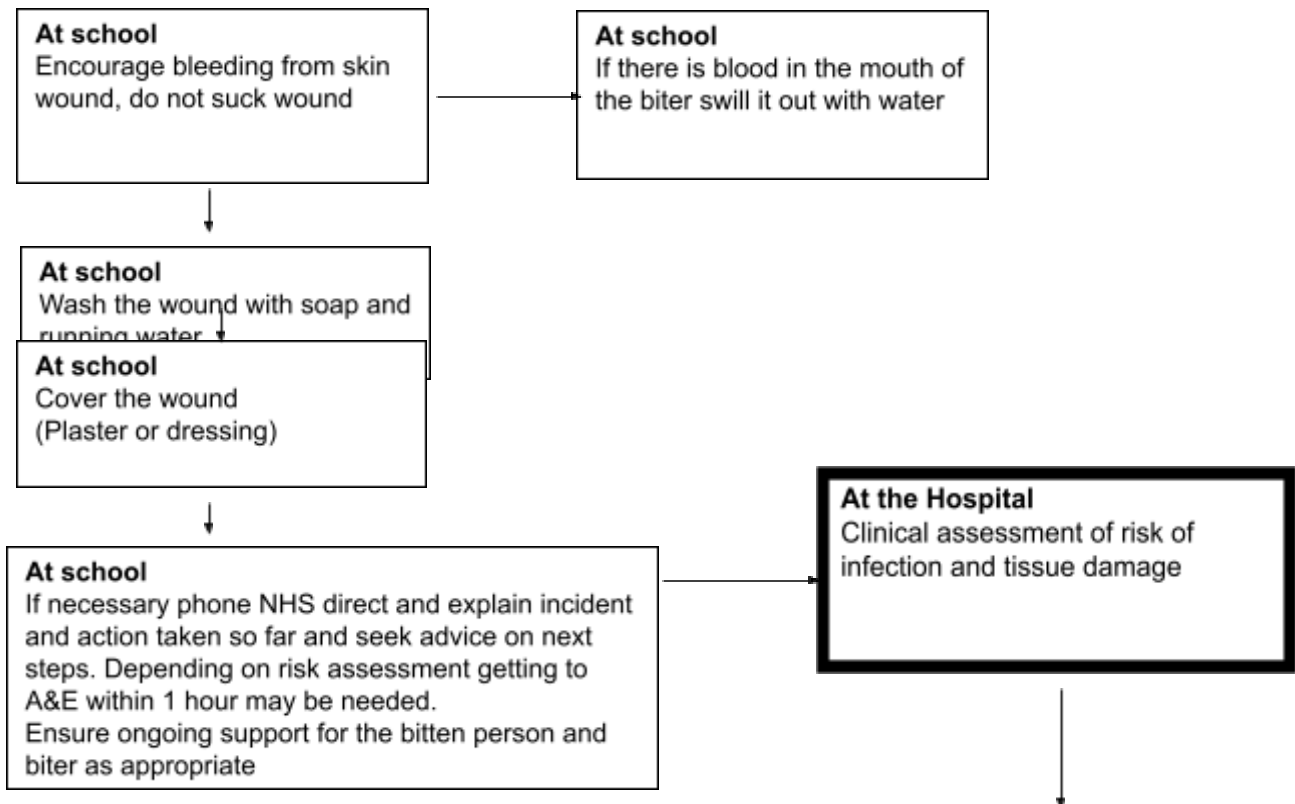
Pertussis (whooping cough)	21 days from onset of paroxysmal cough if no antibiotic treatment given – otherwise 5 days
Poliomyelitis	Until declared free from infection by appropriate public health official
Scarlet fever and streptococcal infection of the throat	5 days from the start of antibiotic treatment
Tuberculosis	consult public health official
Typhoid fever	Consult appropriate public health official
Impetigo	Until the lesions are crusted or healed
Pediculosis (lice)	Until appropriate treatment has been given
Planter warts	No exclusion, should be treated and covered
Ringworm	Until treatment is commenced
Scabies	Until first treatment
COVID19	See risk assessment for guidelines

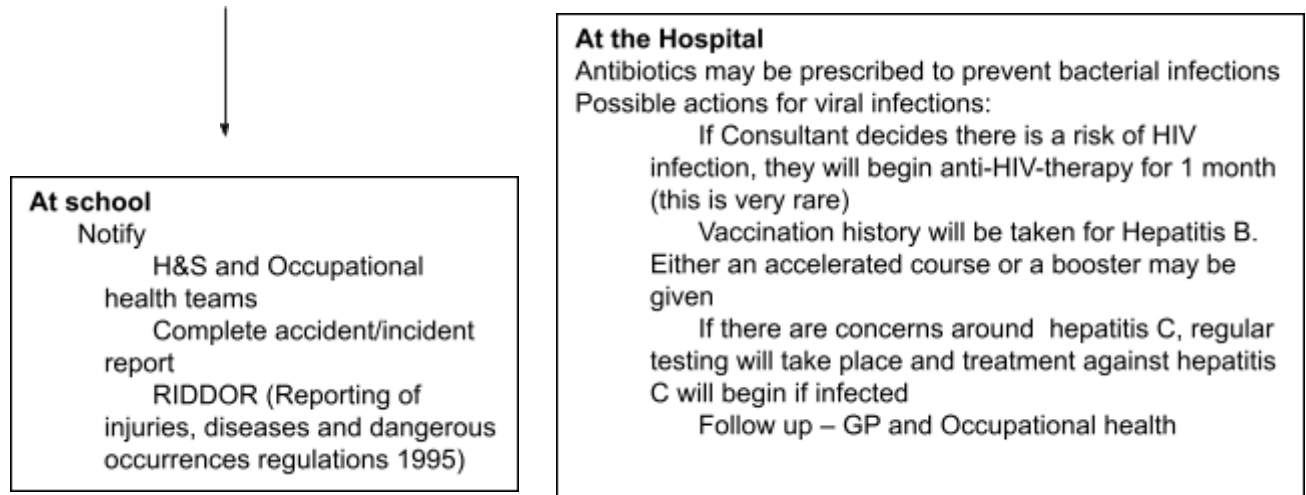


8.2 Appendix 2

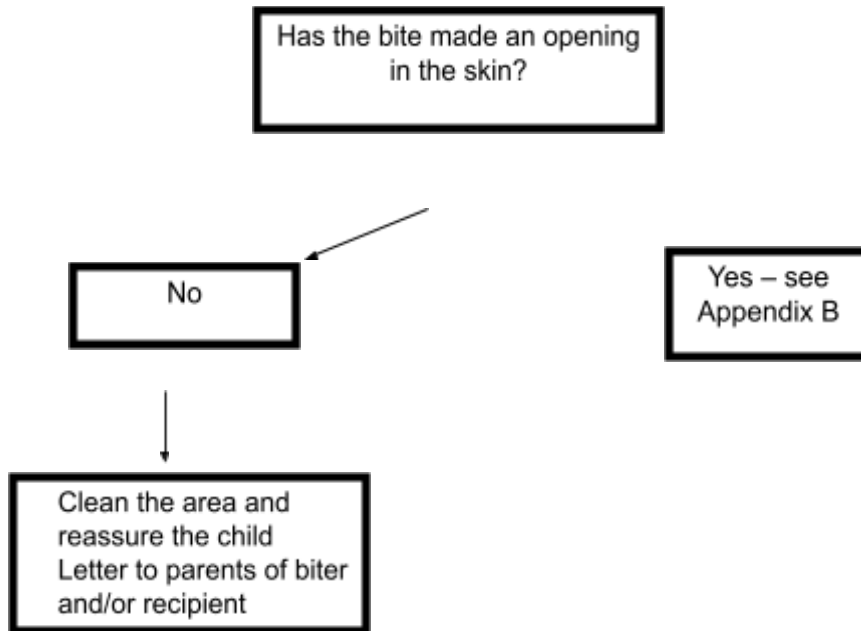
Procedure to follow in the event of a serious human bite wound that breaks the skin.

Use normal first aid procedure plus use of disposable gloves





Management of a human bite that does not break the skin





Together a better future

Hospital A&E departments Barking & Dagenham, Redbridge, Havering, Waltham Forest, Newham, Tower Hamlets, Hackney:

Queen's Hospital – 0845 130 4204
King George Hospital – 020 8983 8000
Whipps Cross Hospital – 020 8539 5522
The Royal London Hospital – 020 7377 7000
St. Bartholomew's Hospital – 020 7377 7000
Newham General Hospital – 020 7476 4000
Homerton University Hospital – 020 8510 5555

Hospital A&E departments Barnet, Camden, Enfield, Haringey, Islington:

Barnet Hospital – 0845 111 4000
Chase Farm Hospital – 0845 111 4000
Edgware Community Hospital – 020 8952 2381
North Middlesex University Hospital – 020 8887 2000
Royal Free Hospital – 020 7794 0500
University College Hospitals – 0845 155 5000
Whittington Hospital – 020 7272 3070

ASSESSMENT OF FIRST AID NEEDS ACTIVITIES

<p>What are the risks of injury and ill-health arising from the work and activities as identified in your risk assessments?</p>	<p>Trips and falls for children at play especially outside</p> <p>Trips & falls for adults and children when equipment is not put away properly.</p> <p>Moving heavy items for staff</p>
---	--



<p>Are there any specific risks? (e.g. work with hazardous substances, dangerous tools, dangerous machinery, higher risk activities,</p>	<p>Cleaning Use of power tools Setting up - moving tables chairs etc Work at heights</p>
<p>Are large numbers of people /children on site?</p>	<p>45 adults 132 children Majority of staff paediatric first aid trained 10 staff first aid at work trained Forest school leaders first aid trained</p>
<p>What is your record of accidents and cases of ill-health? What type and where did they happen?</p>	<p>Slips trips falls outside Adults hurting backs through bending etc outside</p>
<p>Are there staff/children on site who have disabilities or specific health problems?</p>	<p>yes Young children and children with additional needs including reduced mobility</p>
<p>Is there first aid cover for lunch times and for the beginning and end of the working day?</p>	<p>Yes trained staff at lunchtime and in afterschool club</p>
<p>What is the site layout</p>	<p>Single story building - easy to go to all areas quickly- all medication kept in office - easy and quick to access from all rooms</p>



Are there any particularly risky curriculum activities?	Woodwork Fire Both have separate risk assessments
Are there a number of inexperienced or young staff/workers/visitors on site?	yes volunteers and parents - All told who to talk to if they have a first aid concern
What is the distance from emergency services and how long are they likely to take to arrive on site?	Equi distant from 2 major hospitals - ambulances arrive quickly